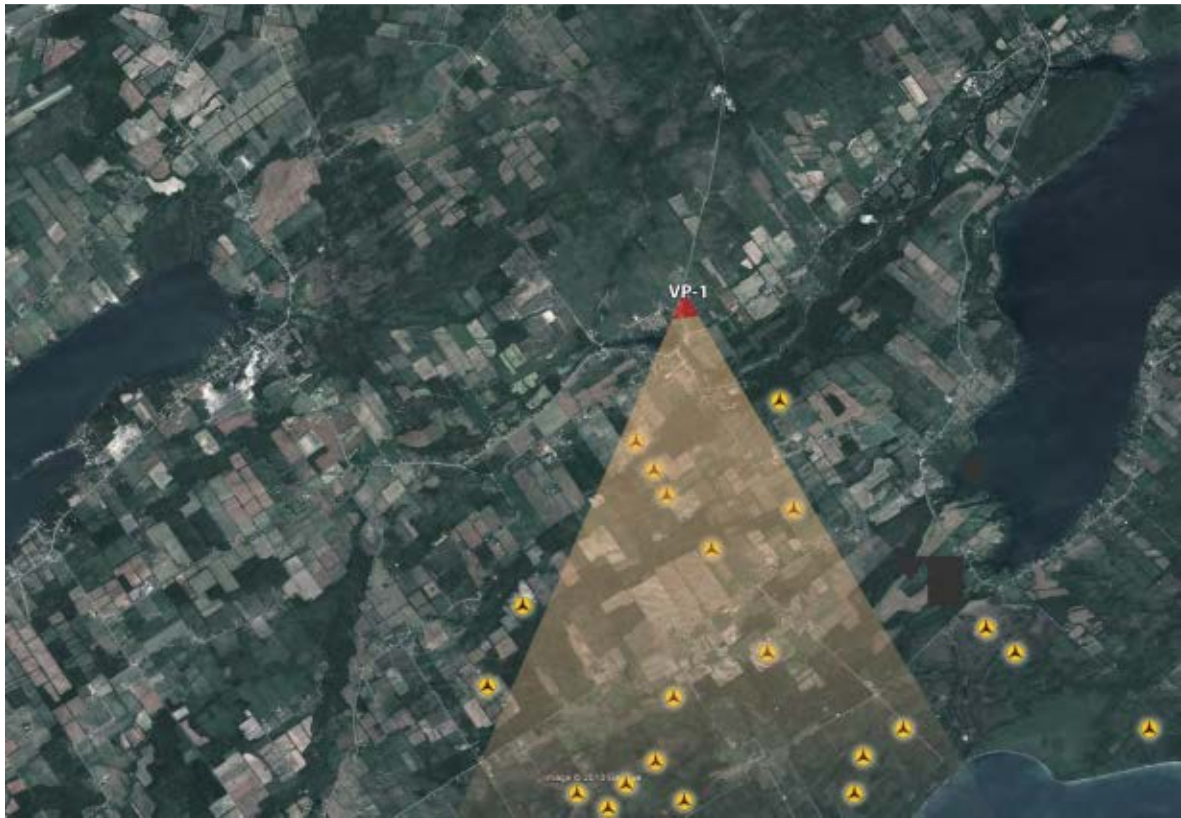


# Appendix G: Visual Simulations



Vantage Point 1

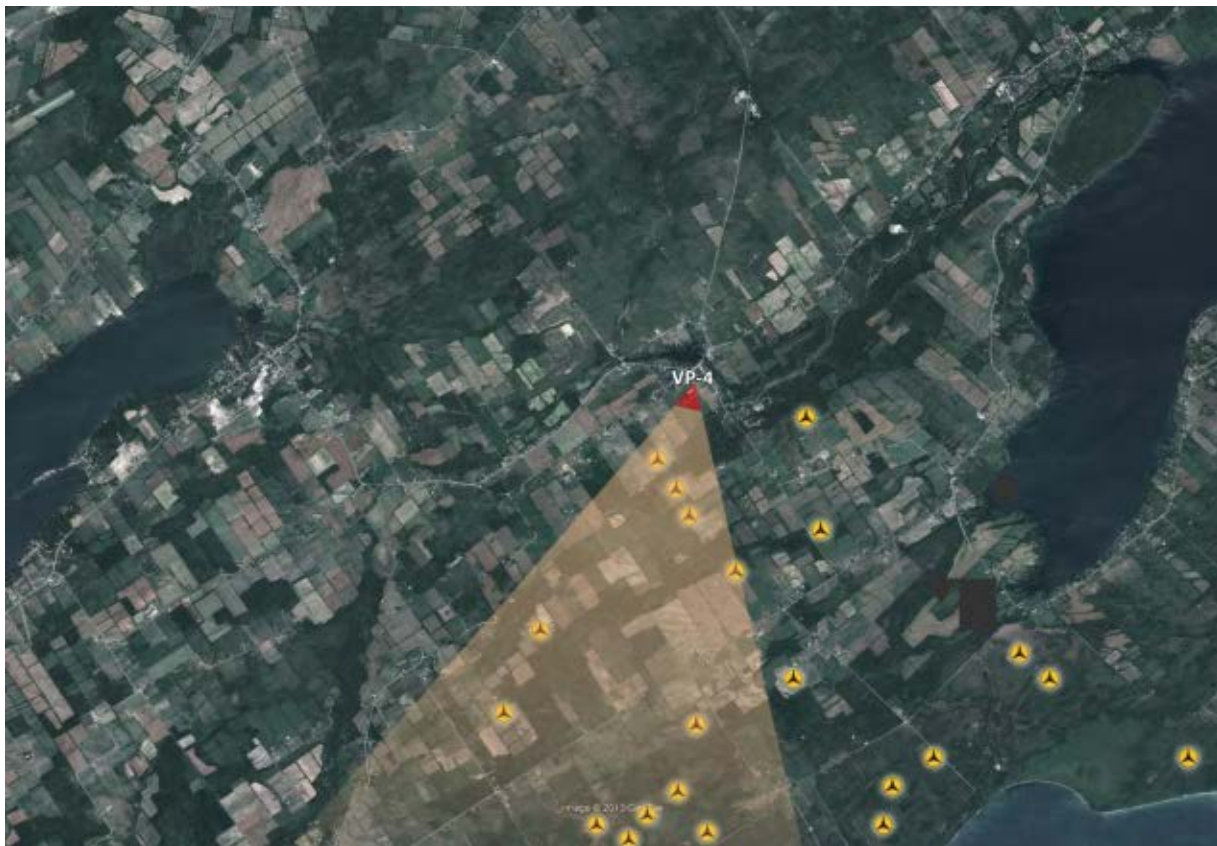


Vantage Point 2





Vantage Point 3



Vantage Point 4





Vantage Point 5

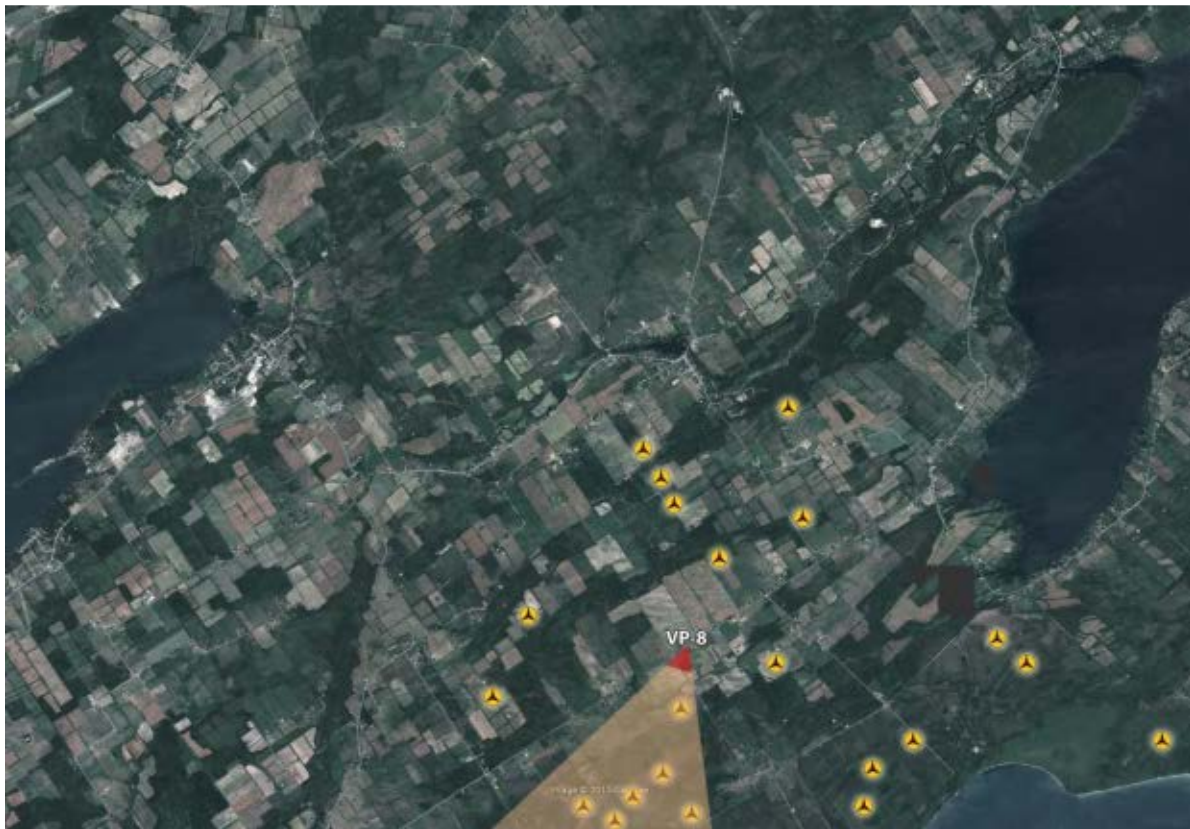


Vantage Point 6





Vantage Point 7

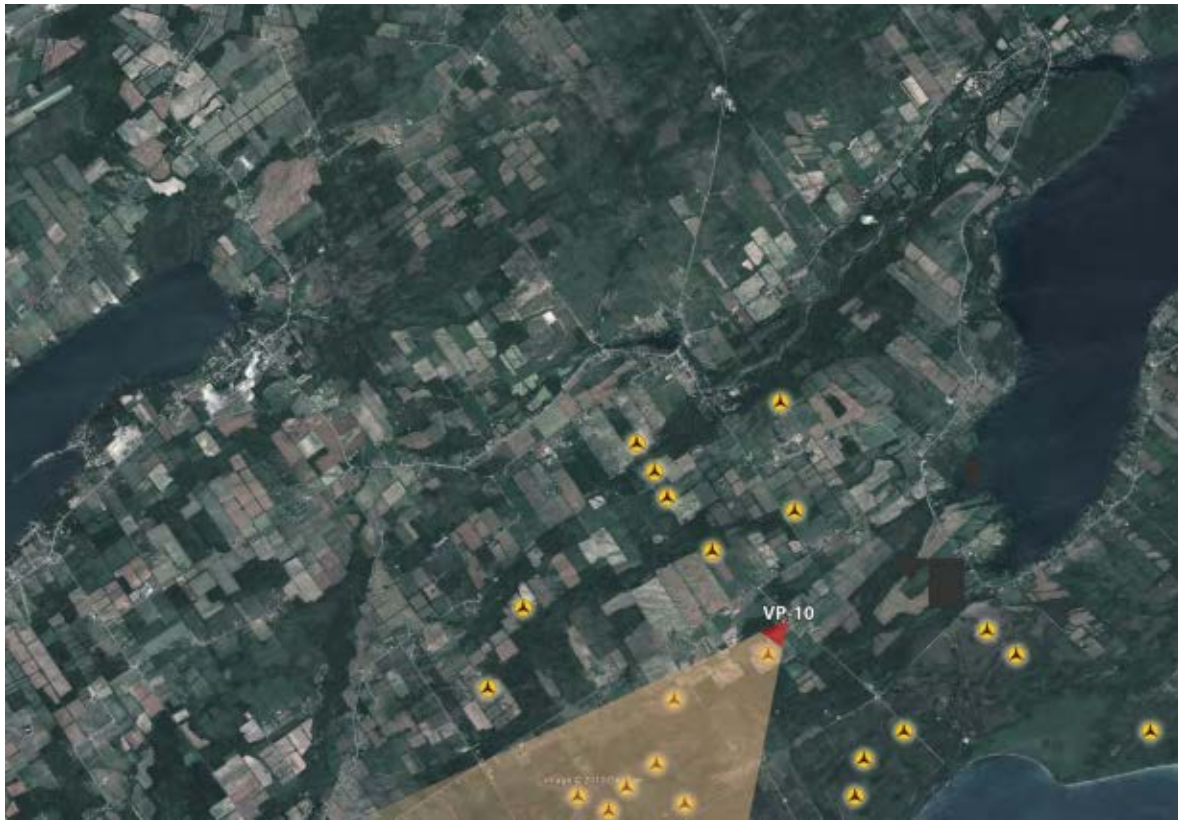


Vantage Point 8



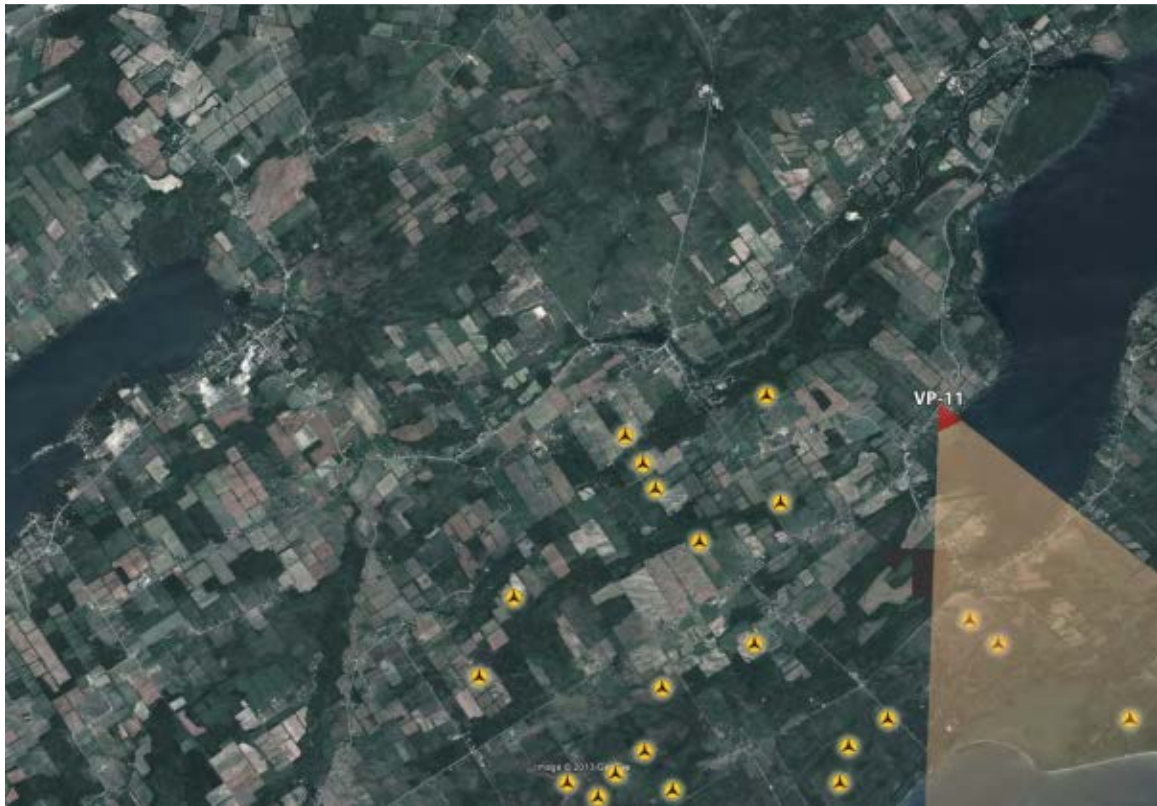


Vantage Point 9

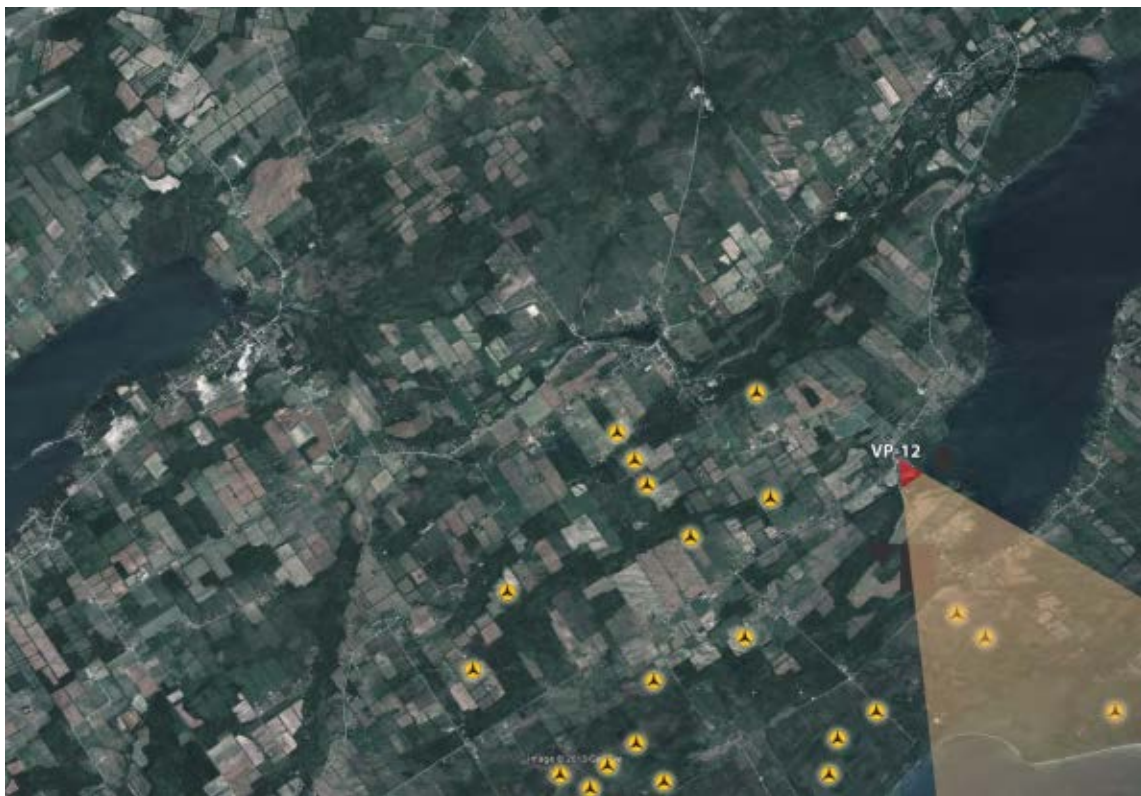


Vantage Point 10





Vantage Point 11



Vantage Point 12





Vantage Point 1: Looking South From Near Junction of Old Milford Road and Scotts Mill Road



Vantage Point 2: Looking South-East from Mount Tabor United Church, County Road 17, Milford





Vantage Point 3: Looking South-East from County Road 10 in Milford



Vantage Point 4: Looking South-West from St. Philips Church, Milford





Vantage Point 5: Looking East From Near 477 Walmsley Road



Vantage Point 6: Looking South-East From Bend Near 191 Walmsley Road, Toward Maypul Layn Road





Vantage Point 7: Looking ESE From 510 Highway 24 Towards Henry House on Lighthall Road



Vantage Point 8: Looking SSW From Royal Road Across Gibbin's Property, Toward Dainard Road





Vantage Point 9: Looking South-East From Royal Road to Rose-Frost House, 940 Royal Road



Vantage Point 10: Looking SSW From 104 Brewers Road Across Long Dog Winery Vineyard





Vantage Point 11: Looking SSE Across South Bay From Near Mathewson House on County Road 13



Vantage Point 12: Looking South-East From the Mariners Park Museum on County Road 13